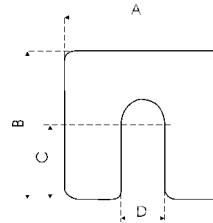


Liefersortiment M-Tech®L – Schälbare Motorunterlagen
Delivery range M-Tech®L – Peelable slotted shims

Messing Brass

Werkstoff / Material: CW505L CuZn30
Norm / Standard: DIN EN 1652
M-Tech®L Type / M-Tech®L type: L
Gesamtdicke / Total thickness: 1,0 mm
Foliendicke / Foil thickness: 0,05 mm



| Artikel-Nr. Article no. | Abmessung in mm Dimension in mm | | | | Gewicht / 100 St Weight / 100 pcs |
|----------------------------|------------------------------------|-----|-----|----|--------------------------------------|
| | A | B | C | D | |
| VM 19 | 43 | 43 | 22 | 12 | 0,970 |
| VM 27 | 48 | 48 | 24 | 14 | 1,209 |
| VM 43 | 53 | 53 | 27 | 14 | 1,313 |
| VM 51 | 68 | 68 | 34 | 16 | 2,280 |
| VM 78 | 83 | 83 | 42 | 20 | 3,476 |
| VM 86 | 98 | 98 | 49 | 25 | 4,613 |
| VM 94 | 118 | 118 | 59 | 30 | 10,648 |
| VM 108 | 200 | 200 | 100 | 36 | 31,902 |

Nichtrostender Stahl Stainless steel

Werkstoff / Material: X5CrNi18-10, 1.4301, AISI 304
Norm / Standard: DIN EN 10088-2
M-Tech®L Type / M-Tech®L Type: C
Gesamtdicke / Total thickness: 1,0 mm
Foliendicke / Foil thickness: 0,05 mm

| Artikel-Nr. Article no. | Abmessung in mm Dimension in mm | | | | Gewicht / 100 St Weight / 100 pcs |
|----------------------------|------------------------------------|-----|-----|----|--------------------------------------|
| | A | B | C | D | |
| VM 116 | 43 | 43 | 22 | 12 | 0,912 |
| VM 124 | 48 | 48 | 24 | 14 | 1,137 |
| VM 132 | 53 | 53 | 27 | 14 | 1,234 |
| VM 140 | 68 | 68 | 34 | 16 | 2,144 |
| VM 159 | 83 | 83 | 42 | 20 | 3,269 |
| VM 167 | 98 | 98 | 49 | 25 | 4,338 |
| VM 175 | 118 | 118 | 59 | 30 | 10,014 |
| VM 183 | 200 | 200 | 100 | 36 | 30,003 |

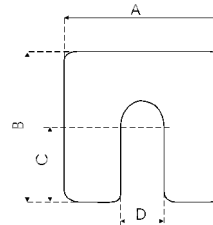
Bestellbeispiel / Ordering example :

Motorunterlage / Slotted shim | M-Tech®L | VM 116 | 43 x 43 | 1,0

Liefersortiment M-Tech[®]P – Paketierte Motorunterlagen
Delivery range M-Tech[®]P – Edge bonded slotted shims

Nichtrostender Stahl *Stainless steel*

Werkstoff / *Material*: X5CrNi18-10
 Norm / *Standard*: DIN EN 10088-2
 Gesamtdicke / *Total thickness*: 1,0 mm
 Foliendicke / *Foil thickness*: 0,1 mm
 Folienzahl / *Number of foils*: 10



| Artikel-Nr. <i>Article no.</i> | Abmessung in mm <i>Dimension in mm</i> | | | | Gewicht / 100 St <i>Weight / 100 pcs</i> |
|-----------------------------------|---|-----|-----|----|---|
| | A | B | C | D | |
| VM 906 | 43 | 43 | 22 | 12 | 1,399 |
| VM 914 | 48 | 48 | 24 | 14 | 1,758 |
| VM 922 | 53 | 53 | 27 | 14 | 2,157 |
| VM 930 | 68 | 68 | 34 | 16 | 3,591 |
| VM 949 | 83 | 83 | 42 | 20 | 5,380 |
| VM 957 | 98 | 98 | 49 | 25 | 7,339 |
| VM 965 | 118 | 118 | 59 | 30 | 10,752 |
| VM 973 | 200 | 200 | 100 | 36 | 31,352 |

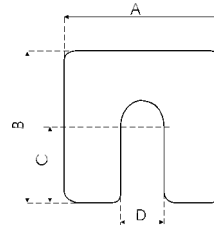
Bestellbeispiel / Ordering example :

Motorunterlage / *Slotted shim* | M-Tech[®]P | VM 906 | 43 x 43 | 1,0

Liefersortiment M-Tech[®]S – Massive Motorunterlagen
Delivery range M-Tech[®]S – Solid slotted shims

Messing Brass

Werkstoff / Material: CW508L
Norm / Standard: DIN EN 1652
Dicke / Thickness: 0,1 mm



| Artikel-Nr. Article no. | Abmessung in mm Dimension in mm | | | | Gewicht / 100 St Weight / 100 pcs |
|----------------------------|------------------------------------|-----|-----|----|--------------------------------------|
| | A | B | C | D | |
| VM 191 | 43 | 43 | 22 | 12 | 0,097 |
| VM 205 | 48 | 48 | 24 | 14 | 0,121 |
| VM 213 | 53 | 53 | 27 | 14 | 0,131 |
| VM 221 | 68 | 68 | 34 | 16 | 0,228 |
| VM 248 | 83 | 83 | 42 | 20 | 0,348 |
| VM 256 | 98 | 98 | 49 | 25 | 0,461 |
| VM 264 | 118 | 118 | 59 | 30 | 1,065 |
| VM 272 | 200 | 200 | 100 | 36 | 3,190 |

Dicke / Thickness: 0,2 mm

| Artikel-Nr. Article no. | Abmessung in mm Dimension in mm | | | | Gewicht / 100 St Weight / 100 pcs |
|----------------------------|------------------------------------|-----|-----|----|--------------------------------------|
| | A | B | C | D | |
| VM 280 | 43 | 43 | 22 | 12 | 0,194 |
| VM 299 | 48 | 48 | 24 | 14 | 0,242 |
| VM 302 | 53 | 53 | 27 | 14 | 0,263 |
| VM 310 | 68 | 68 | 34 | 16 | 0,456 |
| VM 329 | 83 | 83 | 42 | 20 | 0,695 |
| VM 337 | 98 | 98 | 49 | 25 | 0,923 |
| VM 345 | 118 | 118 | 59 | 30 | 2,130 |
| VM 353 | 200 | 200 | 100 | 36 | 6,380 |

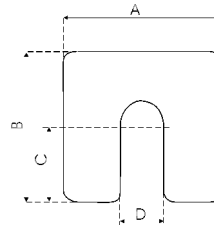
Bestellbeispiel / Ordering example :

Motorunterlage / Slotted shim | M-Tech[®]S | VM 280 | 43 x 43 | 0,1

Liefersortiment M-Tech[®]S – Massive Motorunterlagen
Delivery range M-Tech[®]S – Solid slotted shims

Messing Brass

Werkstoff / Material: CW508L
Norm / Standard: DIN EN 1652
Dicke / Thickness: 0,5 mm



| Artikel-Nr. Article no. | Abmessung in mm Dimension in mm | | | | Gewicht / 100 St Weight / 100 pcs |
|----------------------------|------------------------------------|-----|-----|----|--------------------------------------|
| | A | B | C | D | |
| VM 361 | 43 | 43 | 22 | 12 | 0,485 |
| VM 388 | 48 | 48 | 24 | 14 | 0,605 |
| VM 396 | 53 | 53 | 27 | 14 | 0,656 |
| VM 418 | 68 | 68 | 34 | 16 | 1,140 |
| VM 426 | 83 | 83 | 42 | 20 | 1,738 |
| VM 434 | 98 | 98 | 49 | 25 | 2,306 |
| VM 442 | 118 | 118 | 59 | 30 | 5,324 |
| VM 450 | 200 | 200 | 100 | 36 | 15,951 |

Dicke / Thickness: 1,0 mm

| Artikel-Nr. Article no. | Abmessung in mm Dimension in mm | | | | Gewicht / 100 St Weight / 100 pcs |
|----------------------------|------------------------------------|-----|-----|----|--------------------------------------|
| | A | B | C | D | |
| VM 469 | 43 | 43 | 22 | 12 | 0,970 |
| VM 477 | 48 | 48 | 24 | 14 | 1,209 |
| VM 485 | 53 | 53 | 27 | 14 | 1,313 |
| VM 493 | 68 | 68 | 34 | 16 | 2,280 |
| VM 507 | 83 | 83 | 42 | 20 | 3,476 |
| VM 515 | 98 | 98 | 49 | 25 | 4,613 |
| VM 523 | 118 | 118 | 59 | 30 | 10,648 |
| VM 531 | 200 | 200 | 100 | 36 | 31,902 |

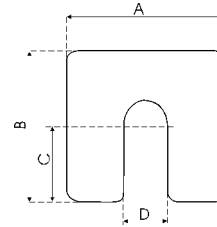
Bestellbeispiel / Ordering example :

Motorunterlage / Slotted shim | M-Tech[®]S | VM 469 | 43 x 43 | 1,0

Liefersortiment M-Tech[®]S – Massive Motorunterlagen
Delivery range M-Tech[®]S – Solid slotted shims

Nichtrostender Stahl *Stainless steel*

Werkstoff / Material: X5CrNi18-10 1.4301 AISI 304
Norm / Standard: DIN EN 10088-2
Dicke / Thickness: 0,1 mm



| Artikel-Nr. Article no. | Abmessung in mm Dimension in mm | | | | Gewicht / 100 St Weight / 100 pcs |
|----------------------------|------------------------------------|-----|-----|----|--------------------------------------|
| | A | B | C | D | |
| VM 558 | 43 | 43 | 22 | 12 | 0,091 |
| VM 566 | 48 | 48 | 24 | 14 | 0,114 |
| VM 574 | 53 | 53 | 27 | 14 | 0,123 |
| VM 582 | 68 | 68 | 34 | 16 | 0,214 |
| VM 590 | 83 | 83 | 42 | 20 | 0,327 |
| VM 604 | 98 | 98 | 49 | 25 | 0,434 |
| VM 612 | 118 | 118 | 59 | 30 | 1,001 |
| VM 620 | 200 | 200 | 100 | 36 | 3,000 |

Dicke / Thickness: 0,2 mm

| Artikel-Nr. Article no. | Abmessung in mm Dimension in mm | | | | Gewicht / 100 St Weight / 100 pcs |
|----------------------------|------------------------------------|-----|-----|----|--------------------------------------|
| | A | B | C | D | |
| VM 639 | 43 | 43 | 22 | 12 | 0,182 |
| VM 647 | 48 | 48 | 24 | 14 | 0,227 |
| VM 655 | 53 | 53 | 27 | 14 | 0,247 |
| VM 663 | 68 | 68 | 34 | 16 | 0,429 |
| VM 671 | 83 | 83 | 42 | 20 | 0,654 |
| VM 698 | 98 | 98 | 49 | 25 | 0,868 |
| VM 701 | 118 | 118 | 59 | 30 | 2,003 |
| VM 728 | 200 | 200 | 100 | 36 | 6,001 |

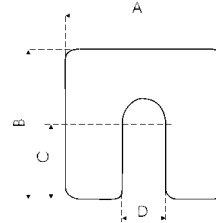
Bestellbeispiel / Ordering example :

Motorunterlage / Slotted shim | M-Tech[®]S | VM 639 | 43 x 43 | 0,2

Liefersortiment M-Tech[®]S – Massive Motorunterlagen
Delivery range M-Tech[®]S – Solid slotted shims

Nichtrostender Stahl *Stainless steel*

Werkstoff / Material: X5CrNi18-10 1.4301 AISI 304
Norm / Standard: EN 10088-2
Dicke / Thickness: 0,5 mm



| Artikel-Nr. Article no. | Abmessung in mm Dimension in mm | | | | Gewicht / 100 St Weight / 100 pcs |
|----------------------------|------------------------------------|-----|-----|----|--------------------------------------|
| | A | B | C | D | |
| VM 736 | 43 | 43 | 22 | 12 | 0,456 |
| VM 744 | 48 | 48 | 24 | 14 | 0,569 |
| VM 752 | 53 | 53 | 27 | 14 | 0,617 |
| VM 760 | 68 | 68 | 34 | 16 | 1,072 |
| VM 779 | 83 | 83 | 42 | 20 | 1,634 |
| VM 787 | 98 | 98 | 49 | 25 | 2,169 |
| VM 795 | 118 | 118 | 59 | 30 | 5,376 |
| VM 809 | 200 | 200 | 100 | 36 | 15,676 |

Dicke / Thickness: 1,0 mm

| Artikel-Nr. Article no. | Abmessung in mm Dimension in mm | | | | Gewicht / 100 St Weight / 100 pcs |
|----------------------------|------------------------------------|-----|-----|----|--------------------------------------|
| | A | B | C | D | |
| VM 817 | 43 | 43 | 22 | 12 | 1,399 |
| VM 825 | 48 | 48 | 24 | 14 | 1,758 |
| VM 833 | 53 | 53 | 27 | 14 | 2,157 |
| VM 841 | 68 | 68 | 34 | 16 | 3,591 |
| VM 868 | 83 | 83 | 42 | 20 | 5,380 |
| VM 876 | 98 | 98 | 49 | 25 | 7,339 |
| VM 884 | 118 | 118 | 59 | 30 | 10,752 |
| VM 892 | 200 | 200 | 100 | 36 | 31,352 |

Bestellbeispiel / Ordering example :

Motorunterlage / Slotted shim | M-Tech[®]S | VM 817 | 43 x 43 | 1,0

Sonderanfertigungen auf Anfrage.

Customized products are available upon RFQ.

Preisstellung sowie Liefer- und Zahlungsbedingungen werden auf schriftliche Anfrage zugesandt.

Price setting as well as terms and conditions of payment and delivery will be notified in written form upon your RFQ.